

MANERBA WILD

↔ 4.3 km

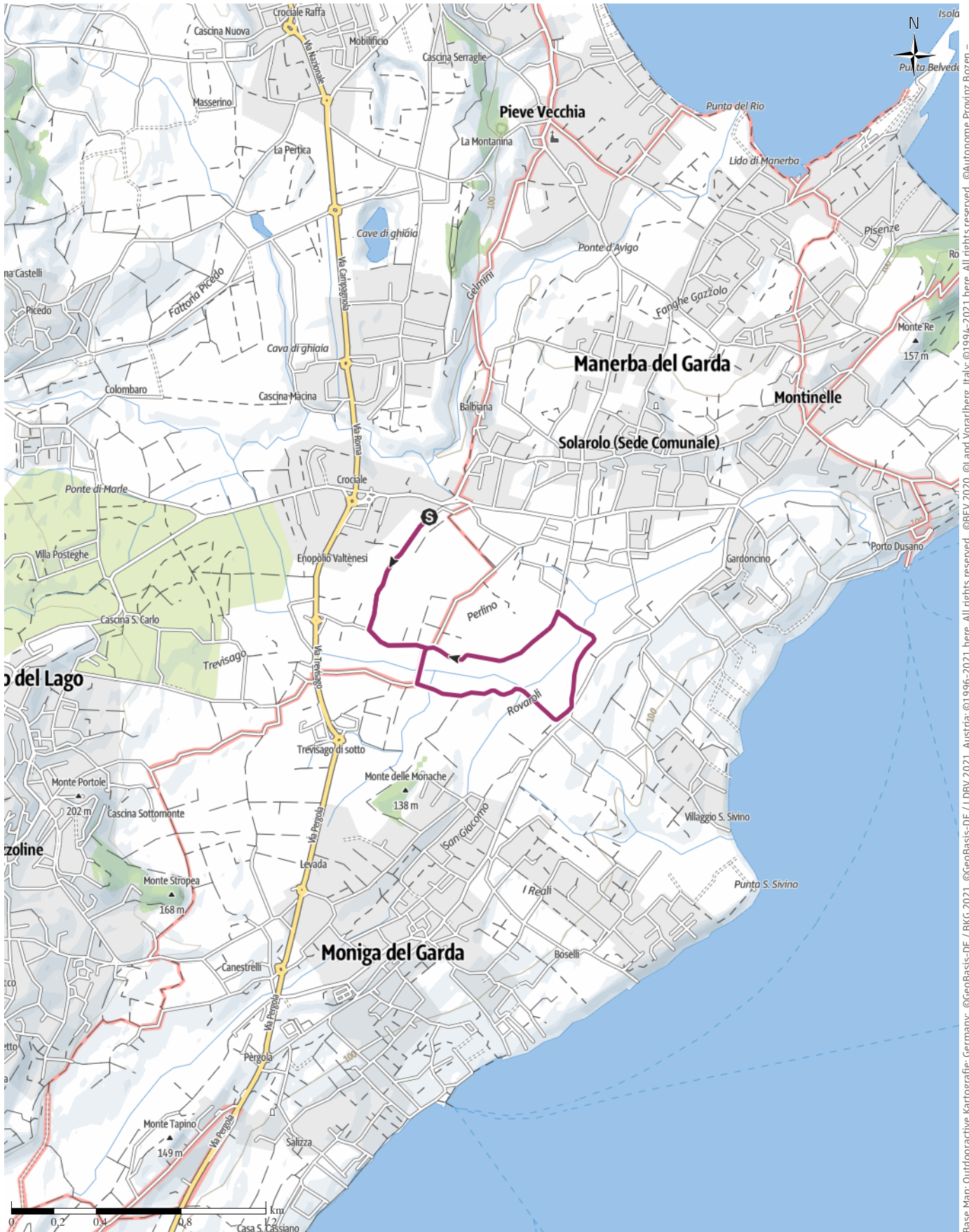
🕒 1:01 h

⬆️ 30 m

⬆️ 29 m

Difficulty

-

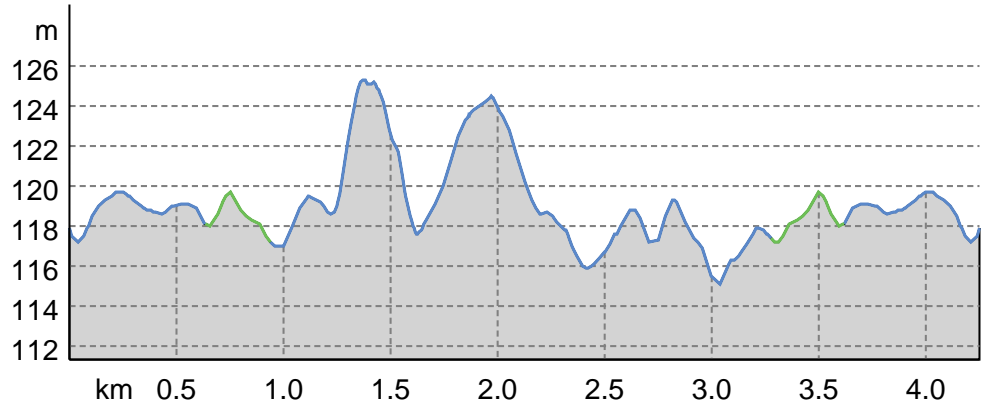


Base Map: Outdooractive Kartografie; Germany: ©GeoBasis-DE / LDBV 2021, Austria: ©1996-2021 here. All rights reserved., ©BBEV 2020, ©Land Vorarlberg, Italy: ©1994-2021 here. All rights reserved., ©Autonome Provinz Bozen - Südtirol - Abteilung Natur, Landschaft und Raumentwicklung, ©Cartago S.R.L. Base Map: outdooractive Cartography, ©OpenStreetMap (www.openstreetmap.org)

Road surface

Dirt road	3.6 km
Way	0.6 km

Elevation profile



route data

City Walking

Distance	↔	4.3 km
Duration	🕒	1:01 h
Ascent	▲	30 m
Descent	▼	29 m

Difficulty -

Stamina ●●●●●●

Technique ●●●●●●

Altitude

Best time of year

- JAN | FEB | MAR
- APR | MAY | JUN
- JUL | AUG | SEP
- OCT | NOV | DEC

Ratings

Authors

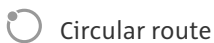
Experience ●●●●●●

Landscape ●●●●●●

Community

More route data

Awards



Camping Europa Silvella

Update: April 10, 2022

Una passeggiata nel verde dei campi di Manerba, lontano dal traffico / A walk in the green fields of Manerba, away from the traffic / Ein Spaziergang durch die grünen Felder von Manerba, weit weg vom Verkehr

Una volta parcheggiata la macchina ci si incammina sul percorso sterrato, adatto anche a chi ha passeggini, che ci porta nella zona verde di Manerba. Potete respirare tra ulivi e vigneti, spesso vedrete i contadini lavorare i campi. Passato il confine con Moniga, troverete l'aera cani ed il maneggio. Il percorso vi riporta alla macchina

dopo circa 40-45 minuti di relax nella natura. Il tratto è soleggiato durante tutto l'arco della giornata, il fondo è sterrato, non essendoci aree sosta consigliamo di portarvi dell'acqua.

GB

Once you have parked your car, you set off along the gravel path, also suitable for those with buggies, which takes you into the green area of Manerba. You can breathe in the olive trees and vineyards, and you will often see farmers working the fields. Once you have crossed the border with Moniga, you will find a dog park and riding stables. The route takes you back to the car after about 40-45 minutes of relaxation in nature. The route is sunny all day long, the road is gravel, and since there are no rest areas, we recommend that you take some water with you.

D

Nachdem Sie Ihr Auto geparkt haben, gehen Sie den Kiesweg entlang, der auch für Kinderwagen geeignet ist und Sie in die grüne Umgebung von Manerba führt. Sie können die Olivenbäume und Weinberge einatmen und

MANERBA WILD

sehen oft Bauern bei der Feldarbeit. Sobald Sie die Grenze zu Moniga überquert haben, finden Sie einen Hundepark und Reitställe. Die Route führt Sie nach etwa 40-45 Minuten Entspannung in der Natur zurück zum Auto. Die Route ist den ganzen Tag über sonnig, der Weg ist geschottert, und da es keine Rastplätze gibt, empfehlen wir Ihnen, Wasser mitzunehmen.

Takeaway route for iPhone and Android



Scan QR code, save this route offline, share with friends and more...

Website

<https://out.ac/I7vZgK>